

Middle School Project Update

January 9, 2025





As of December 17, 2024





performing arts
one story, level 3

8th grade
one story, level 3

Gym
ground floor, level 1

6th grade
two stories, levels 3 & 4

studio arts
ground floor, level 2

Fitness
ground floor, level 1

7th grade
two stories, levels 2 & 3

New Charlottesville Middle School

Exterior Views - December



7th Grade Wing & Gym



Gym



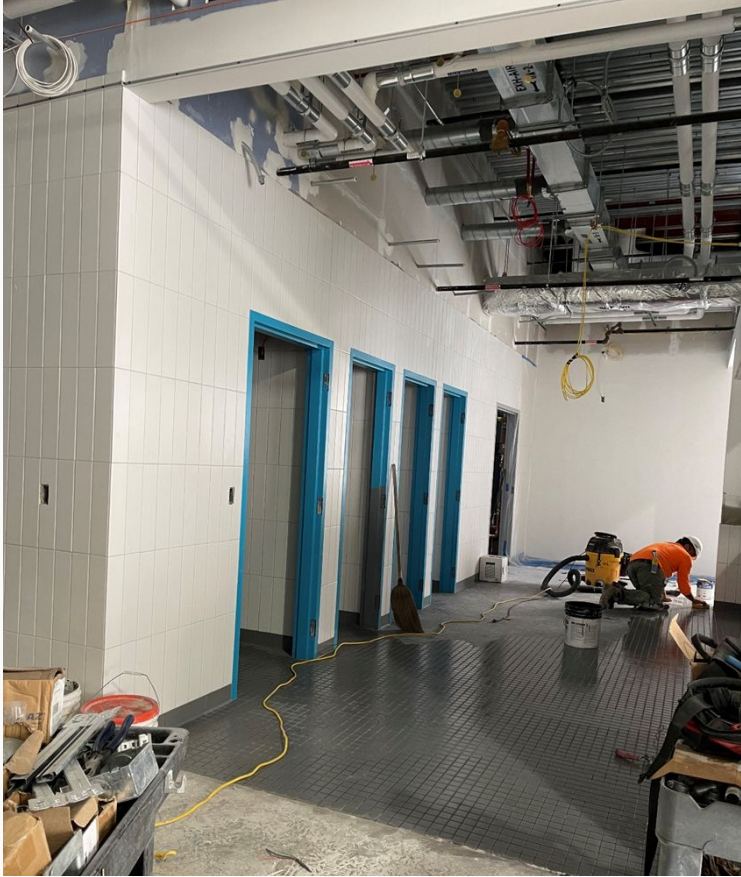
Between Gym & Existing Covered Patio

Interior Views - November/December



Typical Classroom - windows, ceiling grid, drywall

Interior Views - November/December



Restroom Area - tile & plumbing work

Interior Views - November/December



Electrical & Mechanical Equipment

Geothermal pipes coming into the building.



Interior Views - November/December



Interior Views - November/December

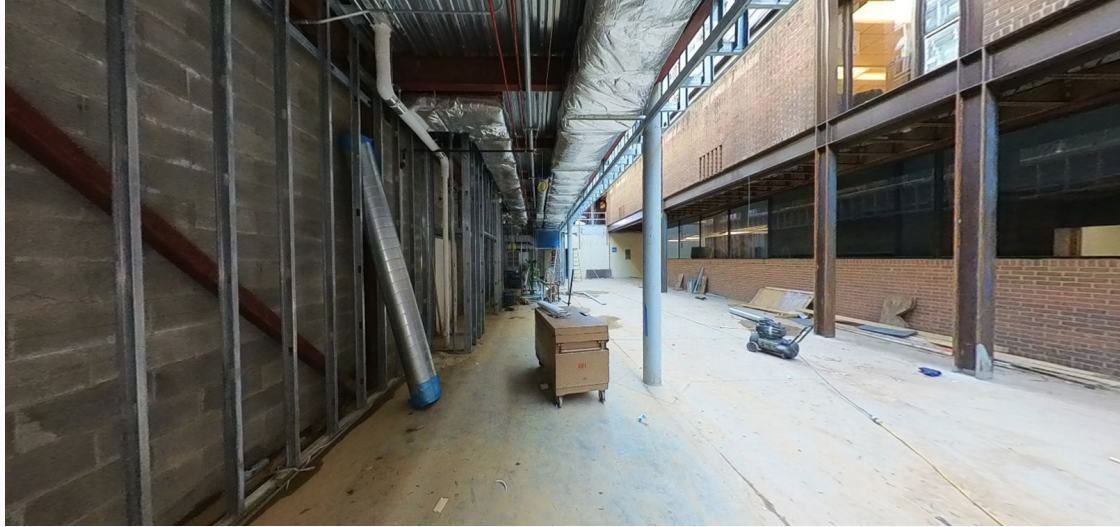


Interior Views - November/December

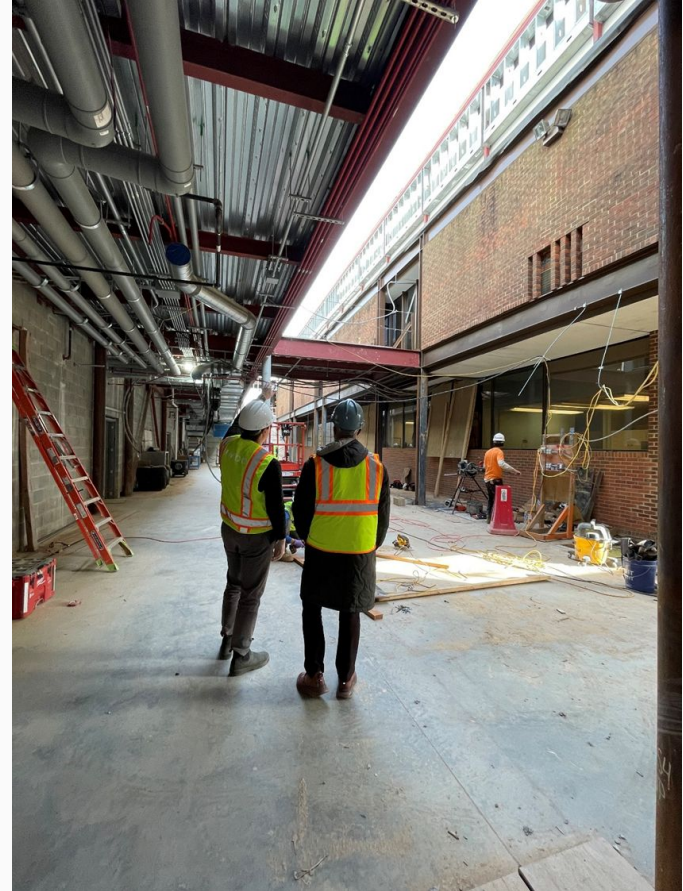


Painting

Interior Views - November/December



Main Entrance Area
(Between Buildings C & D)





F

E

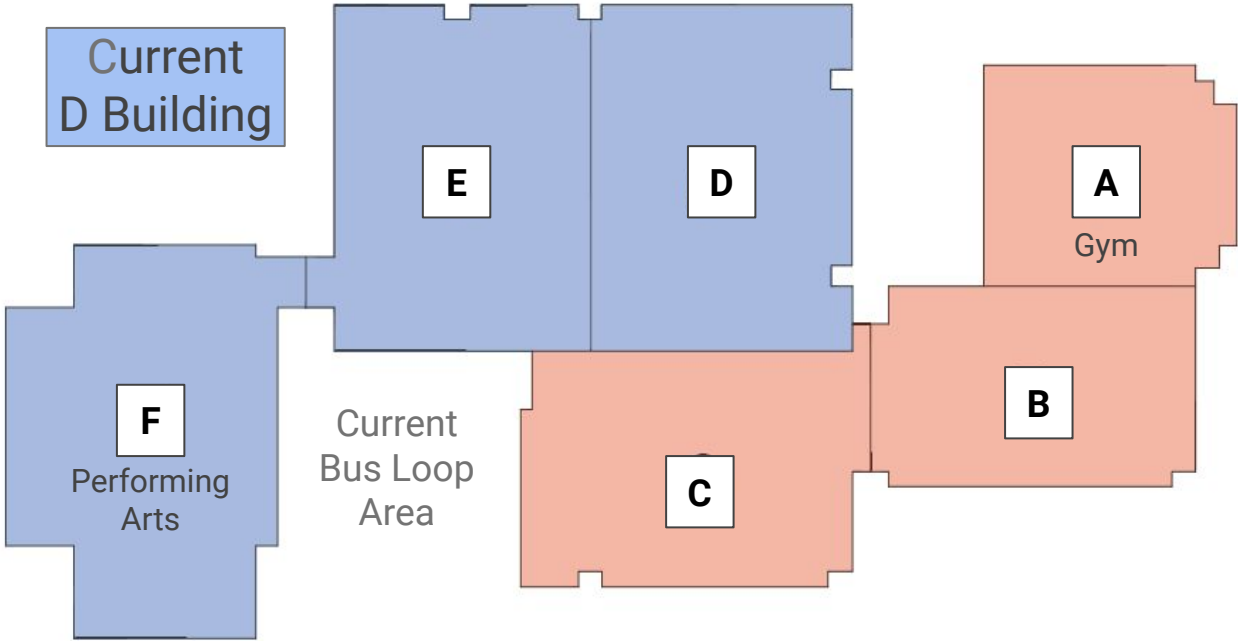
D

C

A
Gym

B

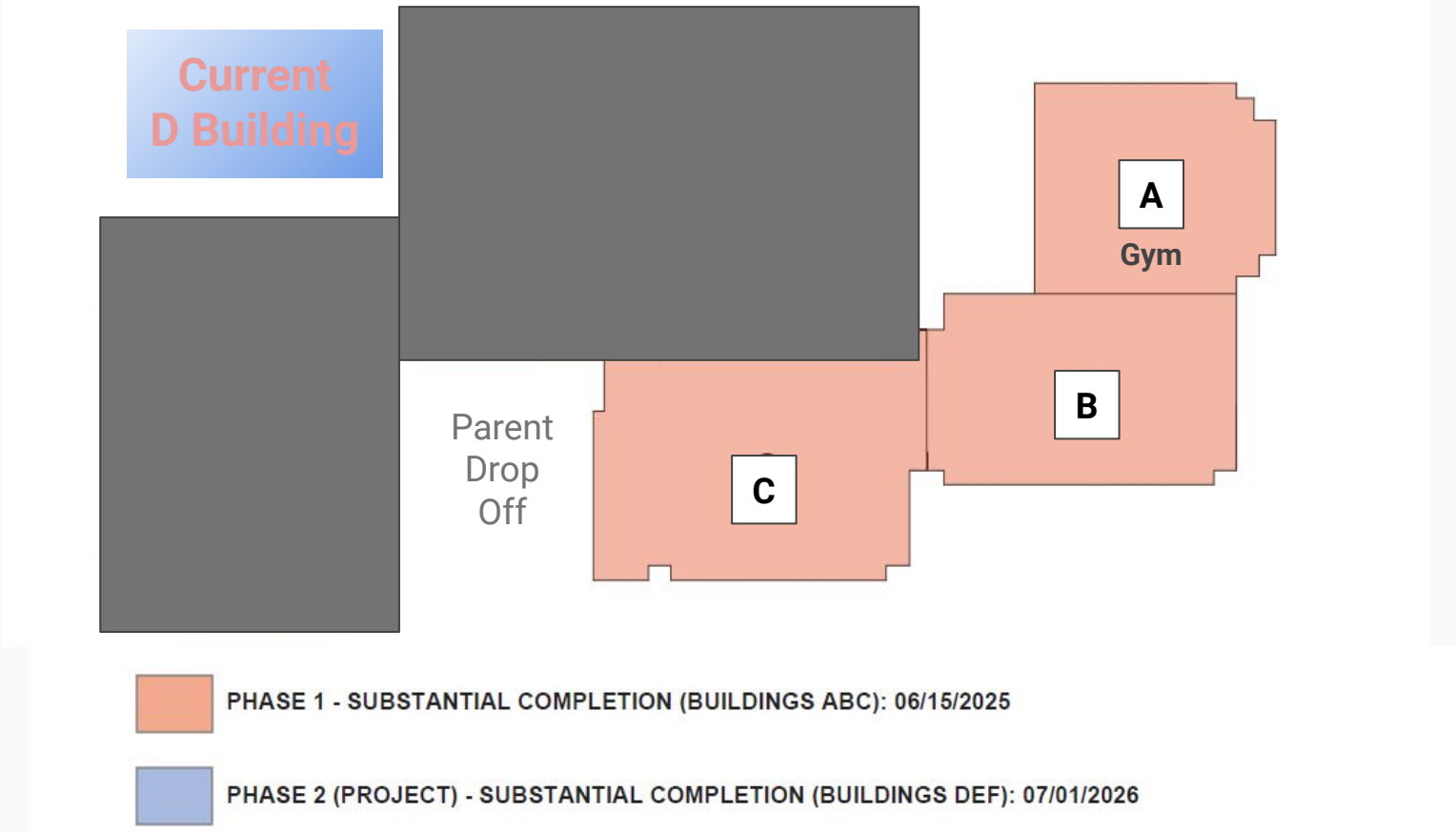
CHARLOTTESVILLE MIDDLE SCHOOL - PHASING PLAN



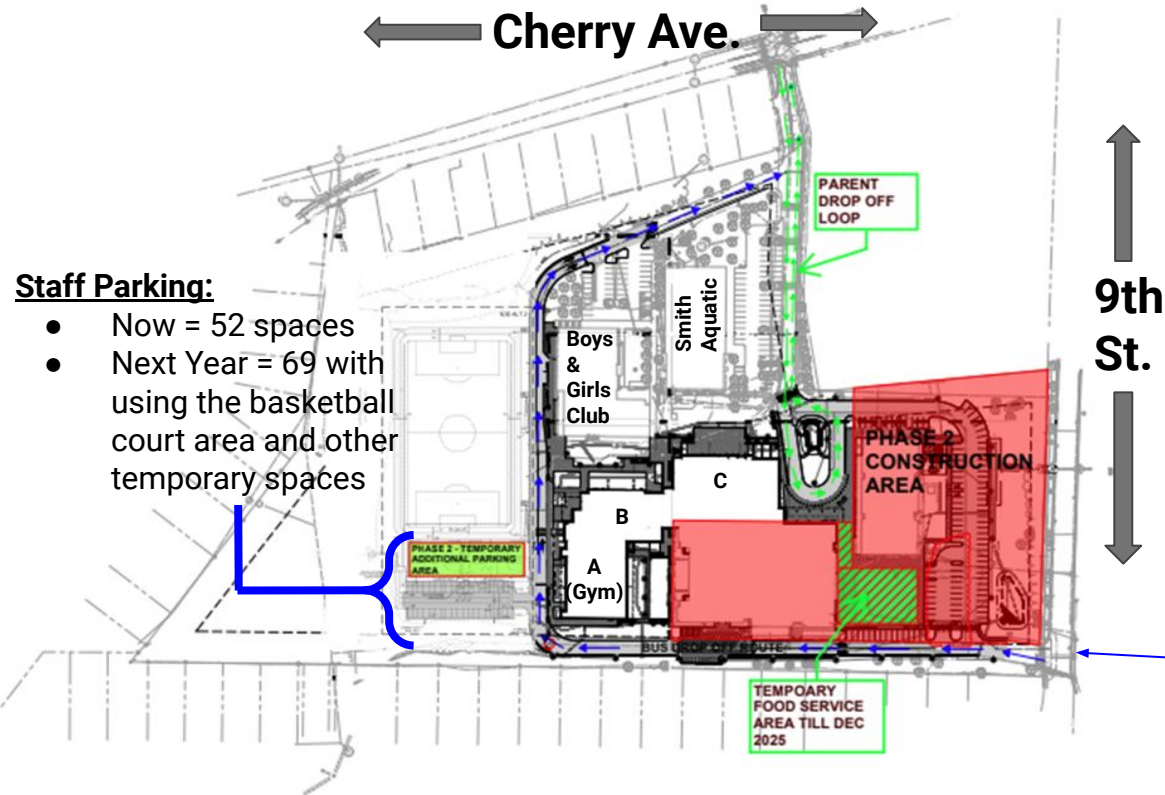
 PHASE 1 - SUBSTANTIAL COMPLETION (BUILDINGS ABC) 06/15/2025

 PHASE 2 (PROJECT) - SUBSTANTIAL COMPLETION (BUILDINGS DEF): 07/01/2026

Buford Middle School: 2025-2026 Interim Condition (Phase 2 Construction)



2025-2026 Traffic Flow & Parking:



Staff Parking:

- Now = 52 spaces
- Next Year = 69 with using the basketball court area and other temporary spaces

- ❖ Parents enter & exit campus on Cherry
- ❖ All other traffic enters from 9th St. SW:
 - Staff (exit on Cherry)
 - Buses (exit on Cherry)
 - Food Deliveries
 - Trash Service
 - Construction Traffic

Summary of Other 2025-2026 Logistics

- Current A & B buildings not available (the main building & auditorium building)
- New gym is open
- Fitness room spaces used for performing arts
- 7th grade moves to new Building B
- 8th grade temporarily moves to new Building C (6th grade wing classrooms)
- Library area will be in the main entrance breakout space
- Other offices and educational spaces in the new buildings will be used differently for this interim year
- Dining will be in the current D building classrooms for the first semester:
 - Hot food prepped off site and delivered (like J-Via)
 - Walkway to the dining area will be covered
 - Outdoor dining may be available in new terraced spaces

After Winter Break

- Old D building closes for demolition
- NEW kitchen and dining commons open January 2026



Looking Ahead - Interior Concept Views

Classrooms



Learning Wings - Breakout Areas



Breakout Areas



Commons Area



LEAP Classroom & Sensory Space



Breakout Space - Main Entrance/Library



Library Spaces



Dining



Reception



Charlottesville Middle School Opening August 2026

For more information:

<https://charlottesvilleschools.org/facilities>

Middle School Modernization