

Charlottesville City Schools | Rezoning Public Hearing Update & Work-Session

March 6, 2025



Agenda

- 1 Why Rezoning?, Process Overview, Key Considerations
- 2 Boundaries
- 3 Preliminary Public Hearing Results & Summary

Why Rezoning?

The primary goal of rezoning is to rebalance school utilizations among our 6 elementary schools into the future.

Why now?

- Populations have shifted over time, leaving some elementary schools well-utilized and others underutilized
 - It is inequitable and operationally inefficient to have some schools sitting below 60% utilized while others are utilized at nearly 80%
- Residential developments have the potential to produce a significant number of students
 - The majority of the developments are located within the southern portion of the Division, with Summit Elementary expected to be hit with the most housing growth over the next 3-10 years
 - Summit Elementary **cannot** support additional capacity on-site; if we do nothing, we are projecting Summit Elementary to be 141% utilized by the 2030-31 school year
 - CCS has the existing elementary capacity to take in the students produced by developments if students are spread more evenly among schools

Rezoning will allow CCS to better balance enrollments among schools over time while also getting ahead of the impact that the housing developments are expected to have.

Rezoning Process



As much as possible:

- Maximize Walkability
- Maximize Bus Efficiency
- Keep Neighborhoods together
- Maintain or Improve Diversity/Demographic Balance
 - *Includes socioeconomics & English Language Learners*
- Longevity (at least 5 years)

Reminder:

Some of these considerations will contradict one another.

The committee was expected to consider the Division as a whole, not just individuals or neighborhoods.

CCS does not control:

- Where students and families reside (student densities)
- The locations or lot sizes of existing housing
- The locations or timelines of housing developments (affordable or not)
- The ability (or inability) to place modular classrooms at some school sites
- The ability (or inability) to add classroom additions to some school sites
- The capacities or locations of existing schools (decisions made 50+ years ago)

Superintendent's Advisory Committee met twice in January (2025) to review feedback and to discuss recommendations.

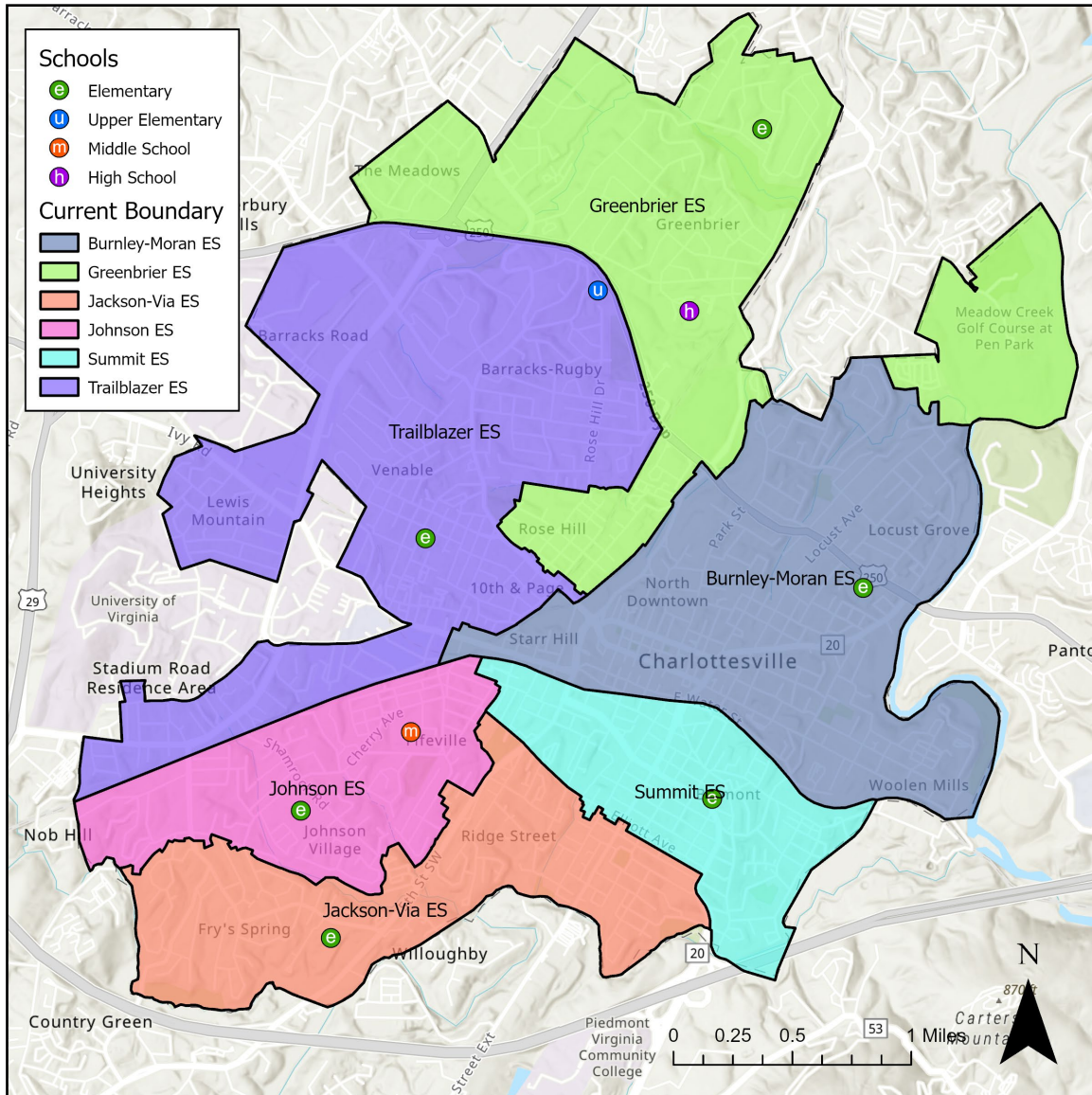
Reminder: This is a group of parent and community member volunteers. This group was expected to remain objective and consider the needs of all CCS students; not just individual students or neighborhoods. Some committee members are impacted in this recommendation.

Their job was to advise the Superintendent on a recommendation, not make a recommendation to the Board, and to provide local information and expertise about community.

The Staff Work Group for Rezoning determined the final recommendation based on the work and feedback from the committee.

Boundaries

Current Boundaries



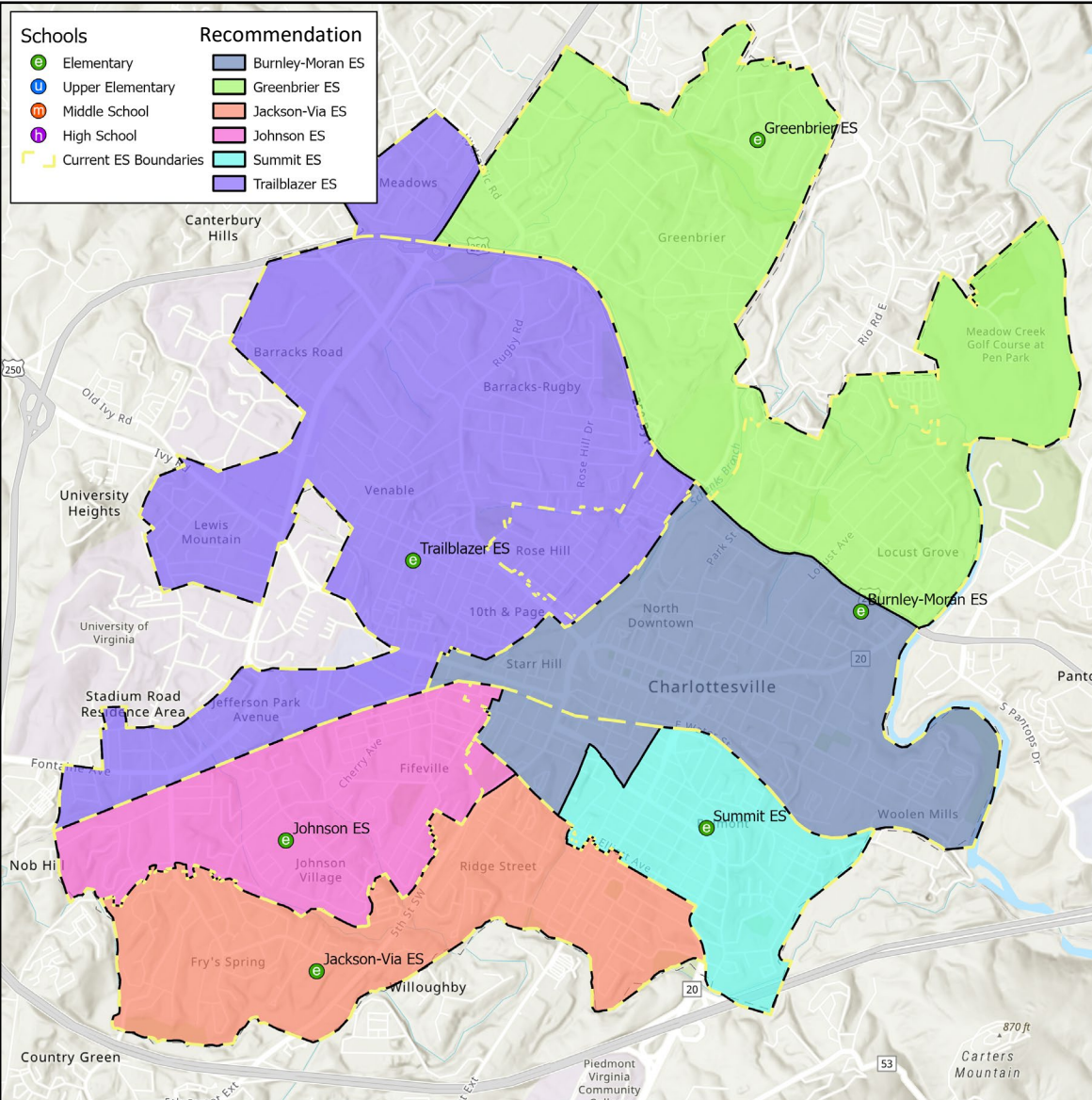
School	2025 Capacity	Live-In Enrollment	Out of Division Enrollment	Utilization	Low SES %	EL %	SPED %	+ Development Utilization
Burnley-Moran ES	512	290	12	57%	34%	13%	3%	68%
Greenbrier ES	464	237	43	51%	49%	27%	3%	62%
Jackson-Via ES	470	371	3	79%	58%	22%	4%	86%
Johnson ES	426	328	19	77%	59%	27%	4%	78%
Summit ES	388	301	4	78%	76%	24%	5%	141%
Trailblazer ES	512	316	9	62%	45%	14%	5%	78%
TOTAL	2,772	1,843	90	66%	55%	22%	4%	84%

Walkable Students	
776	42%

Upcoming Changes:

- 2026-27: PreK will move out of elementary schools, 5th grade students will remain at their assigned elementary school
- Walker Upper Elementary will become a PreK center
- Buford Middle School will become a 6-8 middle school, and be renamed Charlottesville Middle School

Recommendation – January 2025



School	2025 Capacity	Live-In Enrollment	Out of District Enrollment	Utilization	Low SES %	EL %	SPED %	+ Development Utilization
Burnley-Moran ES	512	321	12	63%	59%	21%	3%	85%
Greenbrier ES	464	304	43	66%	42%	19%	4%	86%
Jackson-Via ES	470	371	3	79%	58%	22%	4%	86%
Johnson ES	426	328	19	77%	59%	27%	4%	78%
Summit ES	388	151	4	39%	65%	21%	5%	76%
Trailblazer ES	512	368	9	72%	48%	17%	5%	88%
TOTAL	2,772	1,843	90	66%	55%	22%	4%	84%

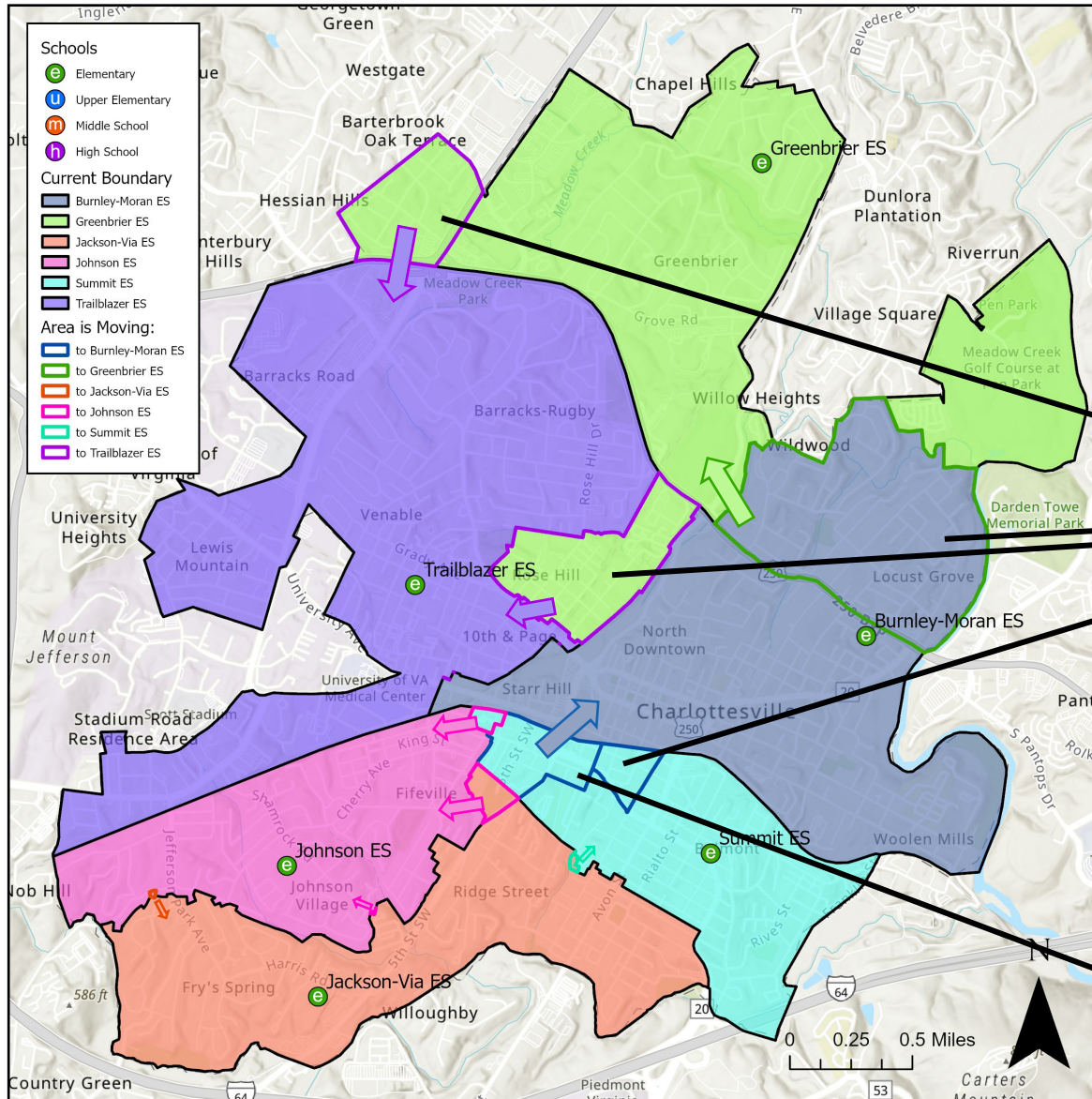
Students Moved	
321	17%

Walkable Students	
667	36%

K-5 Student Movement by School		Recommendation						TOTAL
		Burnley-Moran ES	Greenbrier ES	Jackson-Via ES	Johnson ES	Summit ES	Trailblazer ES	
Current Boundary	Burnley-Moran ES	0	119	0	0	0	0	119
	Greenbrier ES	0	0	0	0	0	52	52
	Jackson-Via ES	0	0	0	0	0	0	0
	Johnson ES	0	0	0	0	0	0	0
	Summit ES	150	0	0	0	0	0	150
	Trailblazer ES	0	0	0	0	0	0	0
TOTAL		150	119	0	0	0	52	321

Recommendation – January 2025

School Locator Tool:



2029-30

1st graders and above will finish at their current schools

Note: priority exemption recommendation would likely allow 24-25 KG to finish at the school in which they start.

2027-28

Priority Exemptions (cohort phasing) Recommendations 9

- ❖ **Incoming 4th and 5th grade** students that apply to remain at their existing school will be prioritized
- ❖ **Early start students** (incoming KG) that apply to attend their future school will be prioritized

Any family choosing to participate in cohort phasing **must** provide their own transportation to and from school every day.

Pupil Transit will offer transportation if future school bus driver staffing allows, but this is not guaranteed.

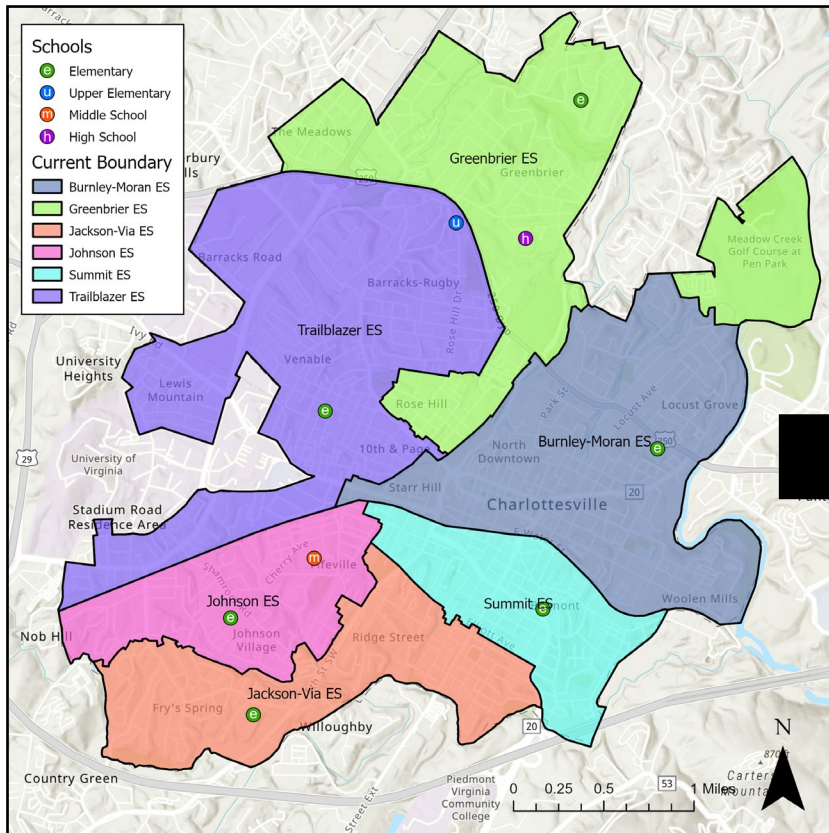
Siblings of students receiving priority exemptions are also welcome to apply for a transfer *while the older, exempted sibling is still attending that school.*

Siblings will be accepted based on space availability.

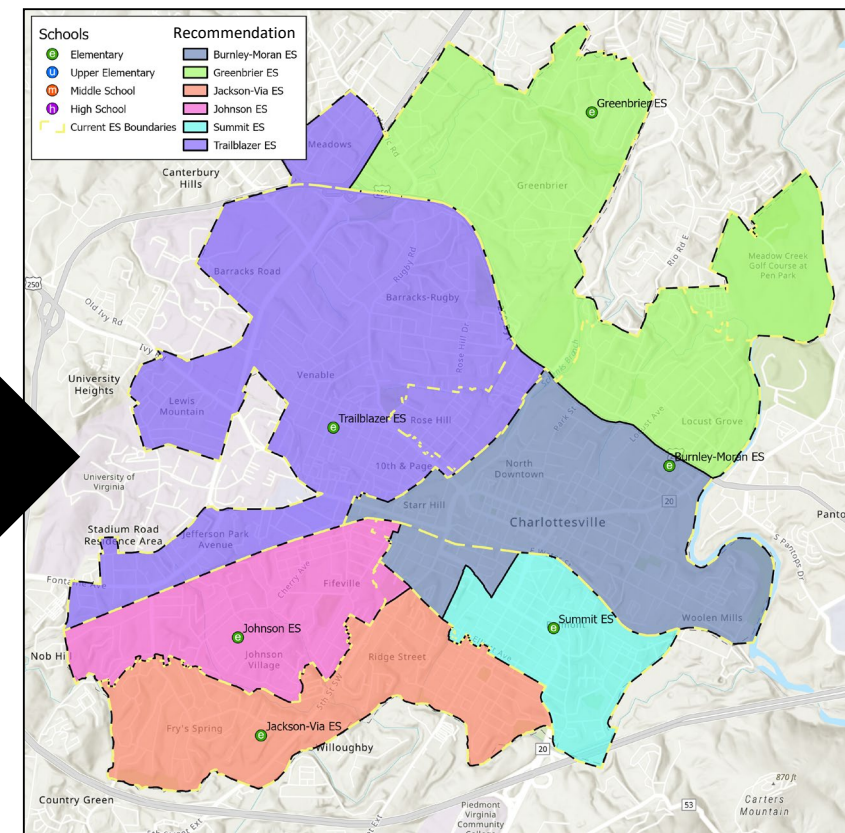
Comparison to Division-wide Averages

Current Boundaries: Comparison to Division Averages				
School	Low SES %	EL %	SPED %	+ Development Utilization
Burnley-Moran ES	-21%	-8%	-1%	-16%
Greenbrier ES	-6%	5%	-1%	-22%
Jackson-Via ES	3%	1%	0%	2%
Johnson ES	4%	6%	0%	-6%
Summit ES	21%	3%	0%	57%
Trailblazer ES	-10%	-7%	1%	-6%
AVERAGE	55%	22%	4%	84%

Recommended Boundaries: Comparison to Division Averages				
School	Low SES %	EL %	SPED %	+ Development Utilization
Burnley-Moran ES	3%	0%	-1%	1%
Greenbrier ES	-14%	-3%	0%	2%
Jackson-Via ES	3%	1%	0%	2%
Johnson ES	4%	6%	0%	-6%
Summit ES	10%	0%	0%	-8%
Trailblazer ES	-8%	-4%	1%	4%
AVERAGE	55%	22%	4%	84%



Walkable Students
-109 -6%



Preliminary

Public Hearing Results & Summary

General Information:

- Q&A session was held 2/4/25 at Summit ES with communities impacted by recommendation
 - Answered questions about recommendation & process
- Community Feedback Survey opened 2/6/25 (when recommendation was announced to Board)
 - **Survey is still open! Closes 3/12/25**
- Public Hearing was held 2/11/25 at CHS for in-person and virtual (Zoom) feedback
- Public Hearing results report will be provided to the Board for review upon closure of the survey

Public Hearing:

23 speakers; 27 testimonies made
Testimony was given both in-person and via Zoom

Feedback Survey:

As of 2/26/25: 186 responses collected
Note: some respondents have replied multiple times

We are likely not hearing from many of the 83% families not impacted

Preliminary Public Hearing Results & Summary

Public Hearing: 2/11/25

With which school(s) are you affiliated? (select all that apply)	
Charlottesville High School	49
Buford Middle School	29
Walker Upper Elementary School	26
Burnley-Moran Elementary School	108
Greenbrier Elementary School	10
Jackson-Via Elementary School	14
Johnson Elementary School	4
Summit Elementary School	20
Trailblazer Elementary School	14
All	11
None	19
Total	308

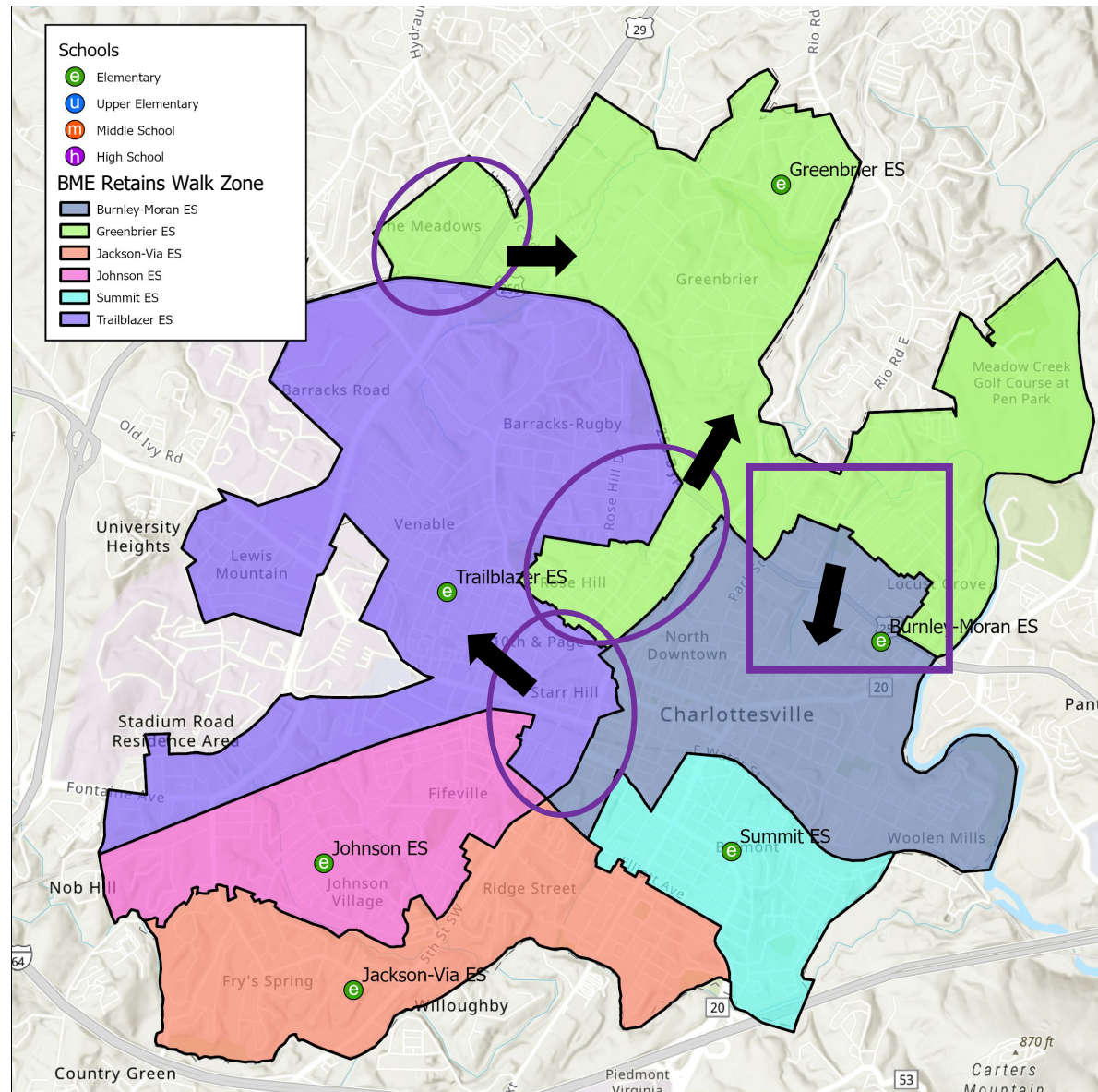
Parent/Guardian/Student status (please select all that apply)	
I am the parent/guardian of a current CCS Pre-Kindergarten student	12
I am the parent/guardian of a current elementary school student	71
I am the parent/guardian of a current upper elementary school student	17
I am the parent/guardian of a current middle school student	16
I am the parent/guardian of a current high school student	35
I am the parent/guardian of a private/parochial school student	8
I am the grandparent of a current and/or future Charlottesville City Schools student	7
I am the parent/guardian of a future Charlottesville City Schools student	35
I am a community member	86
I am a current student	1
I am a Charlottesville City Schools staff member	24
Total	323

Public Hearing: 2/11/25

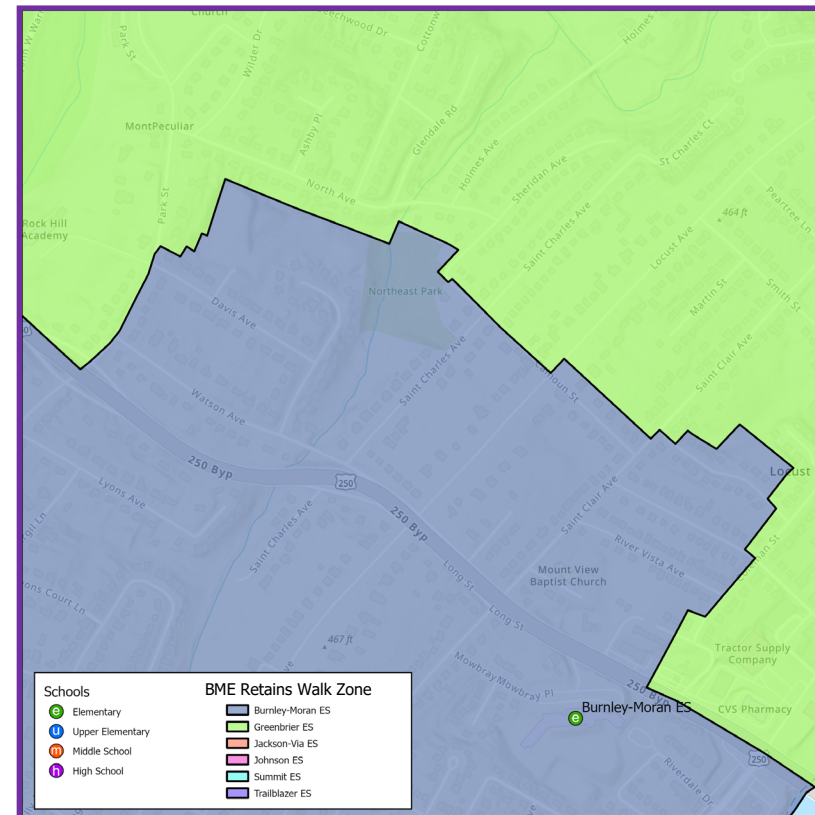
Which area(s) are you providing feedback on? (please select all that apply)	
West of Kindewood (Dice Street area)	17
Kindewood	25
North of 250 (Locust Grove area)	92
South of 250 (Rose Hill area)	3
The Meadows	3
Parcels/areas with no current CCS students	2
All of the above	39
None of the above	6
Total	193

- Many support the action of spreading out diversity throughout the Division so low socioeconomic status students are not concentrated at Summit Elementary like they would have been both in the current configuration and in previously proposed options.
- Although the 250 bypass looks like a good, natural barrier, the cross bridges allow for easy walk– and bike– ability from the Locust Grove neighborhood to Burnley Moran Elementary School.
- A 6% decrease in walkability is not desirable in the recommendation.
- There is a desire for a transportation study to back up the statements about the 250 bypass boundary and bussing.
- Many make note of their concern for the practicality of bussing and if transportation will be reliable.
- There is a strong push for students to attend their closest, “neighborhood” school.
- There are mixed feelings on the timelines for these changes to go into effect. Some support a slower, gradual move, while others are in favor of a quicker timeline.
- Some respondents feel like the process is rushed.
- Some respondents do not believe that their feedback is being taken into account from previous surveys and the public Q&A sessions after reviewing the current recommended elementary school boundaries.

Alternative Plan in Response to Feedback



Alternative Plan								
	2025 Capacity	Live-In Enrollment	Out of District Enrollment	Utilization	Low SES %	EL %	SPED %	+ Development Utilization
Burnley-Moran ES	512	324	12	63%	59%	23%	4%	82.2%
Greenbrier ES	464	322	43	69%	45%	21%	4%	89.6%
Jackson-Via ES	470	371	3	79%	58%	22%	4%	86.1%
Johnson ES	426	328	19	77%	59%	27%	4%	78.3%
Summit ES	388	151	4	39%	65%	21%	5%	76.5%
Trailblazer ES	512	347	9	68%	44%	14%	5%	87.6%
TOTAL	2,772	1,843	90	66%	55%	22%	4%	84%



Students Moved	
239	13%

Walkable Students	
701	38%

Thank you!



WOOLPERT
ARCHITECTURE | ENGINEERING | GEOSPATIAL