

# Career and Technical Education 2023-2024

March 7, 2024



# CTE Program Summary



- Overview
- CTE Enrollment
- Industry Credentialing
- Work-based Learning
- Goals
- Budget Priorities & Local Plan

## Overview

- 16 Career Clusters
- 30+ Career Pathways
- 20 Industry Credentials Offered
- Current enrollment: 1362 students (grades 7-12)
- Cohort 2023 - 134 Completers



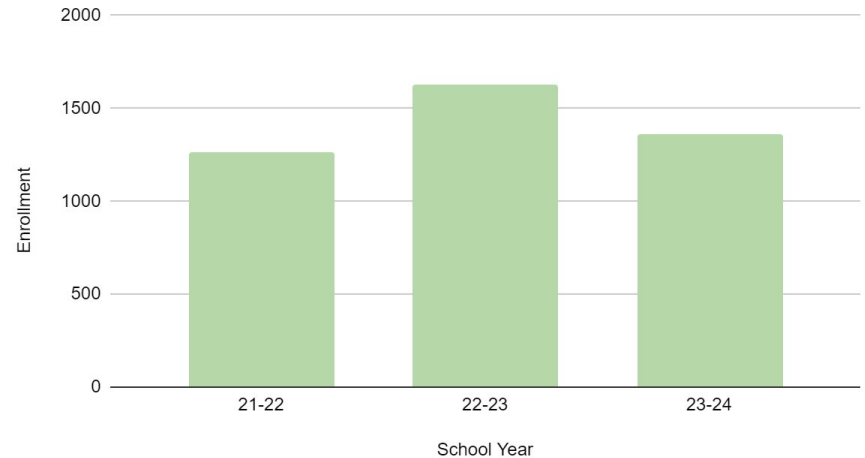
# CTE Enrollment Data



## Top 5 CTE Programs (by size):

- Engineering - 283 students
- Computer Science - 107 students
- Photography - 78 students
- Marketing - 73 students
- CATEC - 72 students

## CTE Enrollment (grades 7-12)



# Industry Credentialing: Snapshot



- Workplace Readiness Assessment Examination
- W!SE Financial Literacy Certification
- SkillsUSA: Photography Examination
- OnShape Certified Associate Examination
- Certified Nurse Aide Examination: Virginia Board of Nursing
- ASE
- NCCER

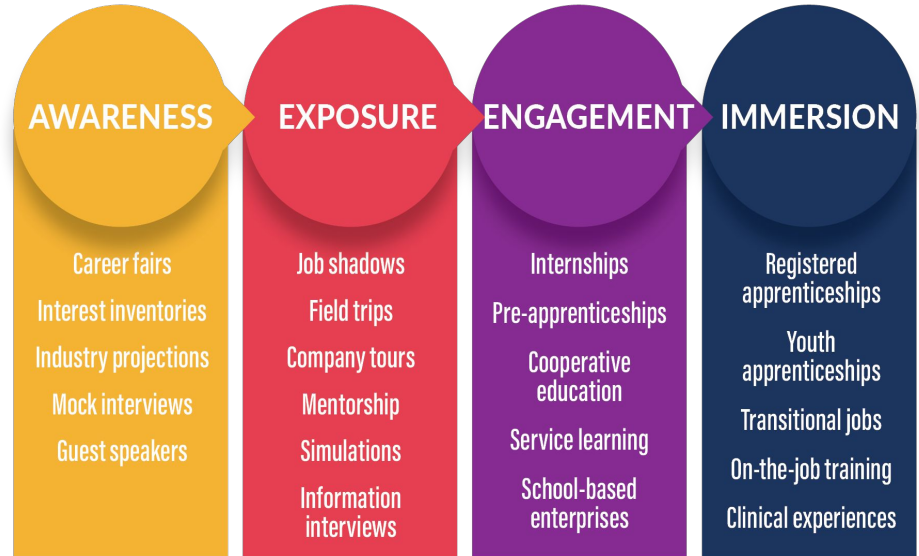
School Division Number	School Division Name	Region	School Number	School Name	Occupational Assessments Passed	State Licensures Earned	Industry Certifications Achieved	WRS Assessments Passed	Total Credentials Achieved	Students Earning One or More Credentials
104	Charlottesville City	5	0140	Charlottesville High	0	9	237	172	418	371

# Work-Based Learning



Top work-based learning experiences:

- Service Learning
- Internships
- Externships



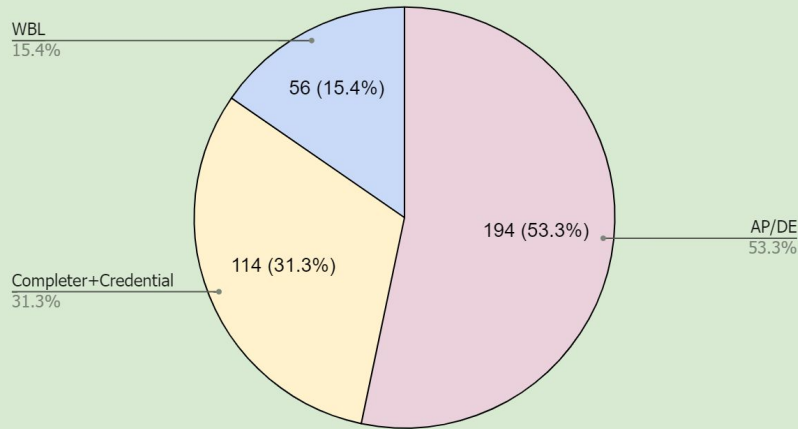
# CCCRI: College, Career, and Civic Readiness Index

The CCCRI is an unduplicated count of students in the on-time graduation cohort who meet at least one of five criteria:

- AP / IB / DE Credit
- CTE completer + credential
- Completion of a work-based learning experience
- Completion of service learning
- Three JROTC courses + credential

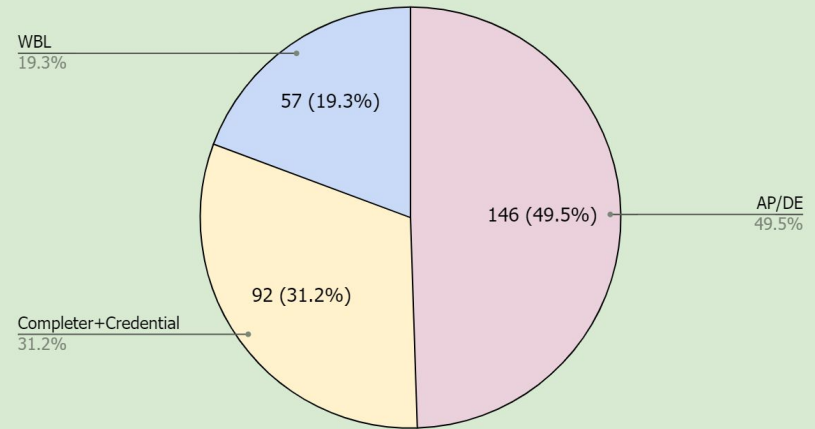
# Cohort 2023 and Cohort 2024

## Cohort 2023 CCCRI



Total students: 295  
Unduplicated count: 225  
No CCCRI: 70  
**CCCRI: 76% (Level 2)**

## Preliminary Cohort 2024 CCCRI



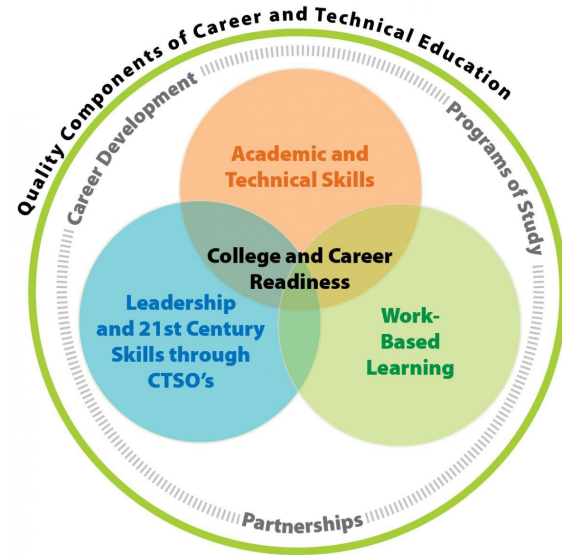
Total students: 299  
Unduplicated count: --  
No CCCRI: 94  
**CCCRI: ~69%**



# Goals for 24-25



- Plans of Study (*Priority 1, Target 3*)
  - Alignment from middle, high school, and CATEC
- Curriculum (*Priority 1, Target 2*)
  - Career and Technical Student Organizations
- Work-based learning (*Priority 1, Target 8*)
  - Increase career awareness and career opportunities for students



# Budget Priorities (CTEMS 17-18)



- Estimated allocation: \$106,782.19
- Priorities
  - CATEC
    - Equipment
    - Professional Learning and Development
  - CHS
    - Professional Learning and Development

# CTE Program Summary



- Overview
- CTE Enrollment
- Industry Credentialing
- Work-based Learning
- Goals
- Budget Priorities & Local Plan

# Nondiscrimination Clause

*The Charlottesville City School Division and its Career and Technical Education Programs does not discriminate with regard to sex, gender, race, color, national origin, disability, religion, ancestry, age, marital or veteran's status, physical or mental genetic information, sexual orientation, gender identity or expression, political affiliation, or any classification protected by applicable law.*