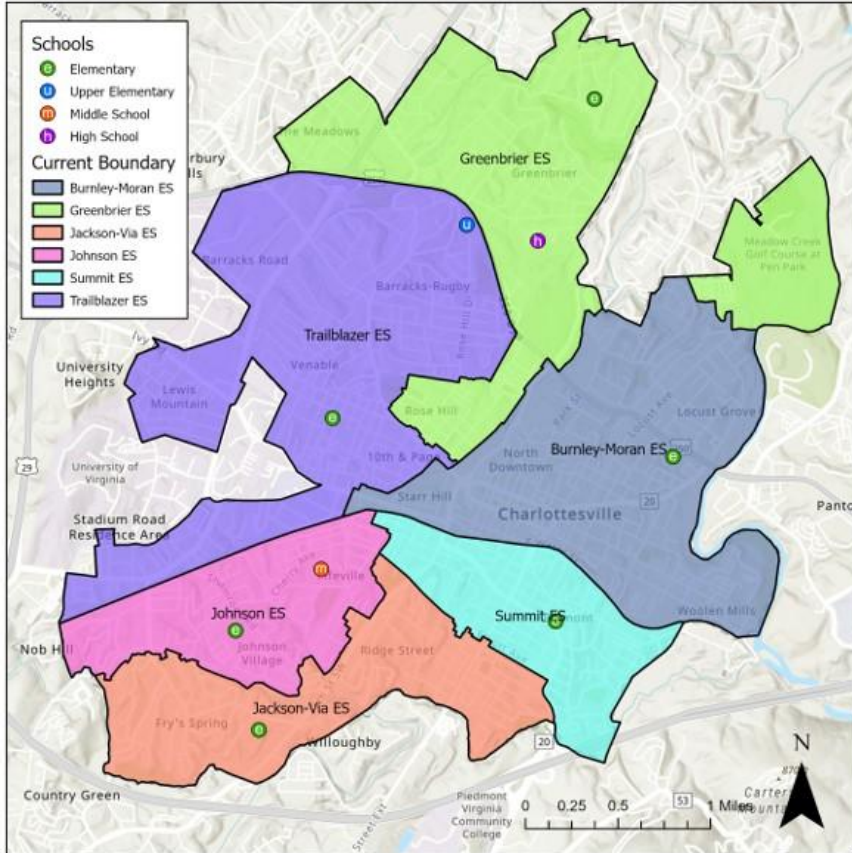




# Elementary School Rezoning

March 27, 2025

# Current Boundaries



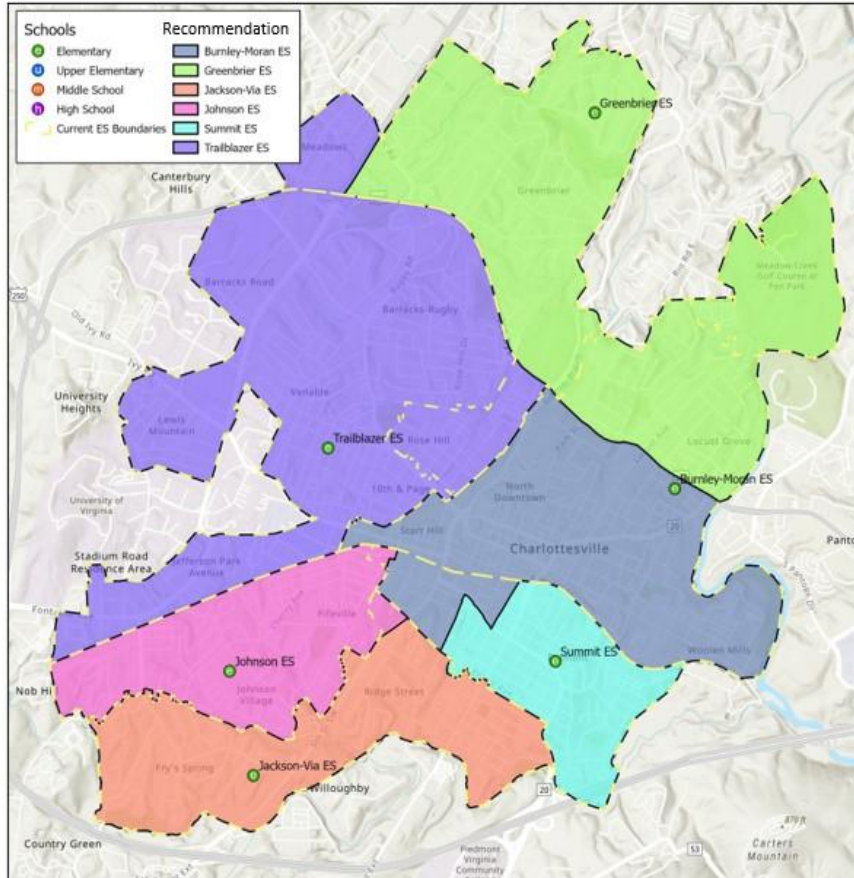
School	2025 Capacity	Live-In Enrollment	Out of Division Enrollment	Utilization	Low SES %	EL %	SPED %	+ Development Utilization
Burnley-Moran ES	512	290	12	57%	34%	13%	3%	68%
Greenbrier ES	464	237	43	51%	49%	27%	3%	62%
Jackson-Via ES	470	371	3	79%	58%	22%	4%	86%
Johnson ES	426	328	19	77%	59%	27%	4%	78%
Summit ES	388	301	4	78%	76%	24%	5%	141%
Trailblazer ES	512	316	9	62%	45%	14%	5%	78%
<b>TOTAL</b>	<b>2,772</b>	<b>1,843</b>	<b>90</b>	<b>66%</b>	<b>55%</b>	<b>22%</b>	<b>4%</b>	<b>84%</b>

Walkable Students	
776	42%

## Upcoming Changes:

- 2026-27: PreK will move out of elementary schools, 5<sup>th</sup> grade students will remain at their assigned elementary school
- Walker Upper Elementary will become a PreK center
- Buford Middle School will become a 6-8 middle school, and be renamed Charlottesville Middle School

# Recommendation – January 2025



School	2025 Capacity	Live-In Enrollment	Out of District Enrollment	Utilization	Low SES %	EL %	SPED %	+ Development Utilization
Burnley-Moran ES	512	321	12	63%	59%	21%	3%	85%
Greenbrier ES	464	304	43	66%	42%	19%	4%	86%
Jackson-Via ES	470	371	3	79%	58%	22%	4%	86%
Johnson ES	426	328	19	77%	59%	27%	4%	78%
Summit ES	388	151	4	39%	65%	21%	5%	76%
Trailblazer ES	512	368	9	72%	48%	17%	5%	88%
<b>TOTAL</b>	<b>2,772</b>	<b>1,843</b>	<b>90</b>	<b>66%</b>	<b>55%</b>	<b>22%</b>	<b>4%</b>	<b>84%</b>

Students Moved	
321	17%

Walkable Students	
667	36%

K-5 Student Movement by School		Recommendation						TOTAL
		Burnley-Moran ES	Greenbrier ES	Jackson-Via ES	Johnson ES	Summit ES	Trailblazer ES	
Current Boundary	Burnley-Moran ES	0	119	0	0	0	0	119
	Greenbrier ES	0	0	0	0	0	52	52
	Jackson-Via ES	0	0	0	0	0	0	0
	Johnson ES	0	0	0	0	0	0	0
	Summit ES	150	0	0	0	0	0	150
	Trailblazer ES	0	0	0	0	0	0	0
<b>TOTAL</b>		<b>150</b>	<b>119</b>	<b>0</b>	<b>0</b>	<b>0</b>	<b>52</b>	<b>321</b>

# Priority Exemptions (cohort phasing) Recommendations

- ❖ **Incoming 4<sup>th</sup> and 5<sup>th</sup> grade** students that apply to remain at their existing school will be prioritized
- ❖ **Early start students** (incoming KG) that apply to attend their future school will be prioritized

Any family choosing to participate in cohort phasing **must** provide their own transportation to and from school every day.

Pupil Transit will offer transportation if future school bus driver staffing allows, but this is not guaranteed.

Siblings of students receiving priority exemptions are also welcome to apply for a transfer *while the older, exempted sibling is still attending that school.*

**Siblings will be accepted based on space availability.**



# REZONING PROPOSAL IMPACTED NEIGHBORHOODS



		School Year					
		24-25	25-26	26-27	27-28	28-29	29-30
Neighborhood	WEST OF KINDLEWOOD (DICE ST. AREA)	SUMMIT	SUMMIT	SUMMIT	SUNRISE (FORMERLY BME)		
	KINDLEWOOD	SUMMIT	SUMMIT	SUMMIT	SUMMIT	SUMMIT	SUNRISE (FORMERLY BME)
	NORTH OF 250 (LOCUST GROVE AREA)	BURNLEY-MORAN (FUTURE SUNRISE)	SUNRISE (FORMERLY BME)	SUNRISE (FORMERLY BME)	SUNRISE (FORMERLY BME)	SUNRISE (FORMERLY BME)	GREENBRIER
	SOUTH OF 250 (ROSE HILL AREA)	GREENBRIER	GREENBRIER	GREENBRIER	GREENBRIER	GREENBRIER	TRAILBLAZER
	THE MEADOWS	GREENBRIER	GREENBRIER	GREENBRIER	GREENBRIER	GREENBRIER	TRAILBLAZER
	SMALL PARCELS WITH NO CURRENT CCS STUDENTS	VARIOUS SCHOOLS	REZONED SCHOOL				

\* 4th/5th graders, younger siblings, and future kindergarteners are eligible to apply for exemptions from timeline

\*\*Timeline may be pushed back based on construction progress of new developments

Updated  
1/30/2025

# School Attendance Zones - Policy JC Update



To support priority exemptions, this policy update:

- ❖ Adds rezoning as a reason that families may apply for a student to attend an elementary school outside their zone of residence.
- ❖ New online application will be made available on the CCS website following the School Board action scheduled for the May 1 meeting.
  - Families may only apply to attend out of zone for the next school year (not multiple years in advance)
- ❖ Some families may wish to use the out-of-zone application in May 2025:
  - Example: Families whose oldest child will be in kindergarten or first grade this fall. If they apply to go to their “future” school in August 2025, they will prevent their family from having to make the shift later.
  - For more information, see grade-by-grade options for [Dice Street Area](#) and [All Other Neighborhoods](#)

[View the complete draft updated Policy JC here.](#)